



1. HAFTA

Kazanım:

Describing what people do regularly

Telling the time and dates



914968

ÖĞRENCİ NO

0	0	0	0	0
1	1	1	1	1
2	2	2	2	2
3	3	3	3	3
4	4	4	4	4
5	5	5	5	5
6	6	6	6	6
7	7	7	7	7
8	8	8	8	8
9	9	9	9	9

YANITLAR

1	A	B	C	D
2	A	B	C	D
3	A	B	C	D
4	A	B	C	D
5	A	B	C	D
6	A	B	C	D
7	A	B	C	D
8	A	B	C	D
9	A	B	C	D
10	A	B	C	D
11	A	B	C	D
12	A	B	C	D
13	A	B	C	D
14	A	B	C	D
15	A	B	C	D
16	A	B	C	D
17	A	B	C	D
18	A	B	C	D
19	A	B	C	D
20	A	B	C	D

Adı ve Soyadı:

Sınıfı:

Doğru Sayısı:

Yanlış Sayısı:

1.



Emily

Hi! I'm Emily. I meet my friends in the park after school on weekdays. When I get back home, I do my homework and help my mom in the kitchen.

According to the speech bubble above, which of the following does NOT Emily do after school?

A)



B)



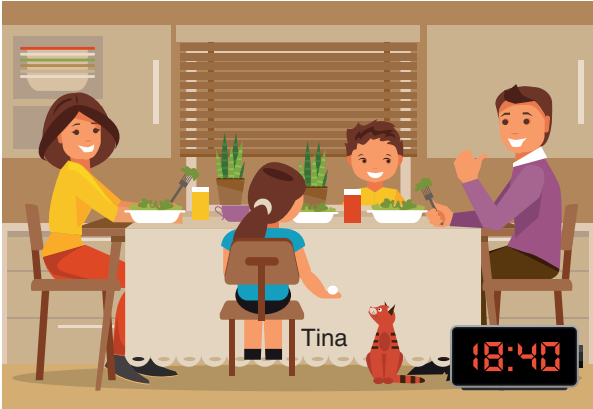
C)



D)



2.



Tina

According to the picture above, Tina ----

A) has lunch at fourteen past eight p.m.

B) gets back home at half past seven p.m.

C) runs errands at four to eight p.m.

D) has dinner at twenty to seven p.m.

3.



The school starts at ten past nine a.m. I have lunch at school at twenty to one p.m. The lessons finish at half past three and I return home at ten to four p.m.

Which of the following is NOT in the speech bubble above?

A)



B)



C)



D)





4.

Paul's Routines

	Mon.	Tue.	Wed.	Thu.	Fri.	Sat.	Sun.
get up early	✓	✓	✓	✓	✓	✓	✓
ride his bike	✓	✓	✓	✓	✓		
visit grandma							✓
watch TV						✓	✓

According to the table above, which of the following is CORRECT?

- A) Paul gets up late on weekdays. B) Paul rides his bike at the weekend.
C) Paul visits his relative at the weekend. D) Paul watches TV on weekdays.

5.



Which question completes the dialogue above?

- A) Do you run errands at home
B) What time do you get up
C) When do you meet your cousins
D) Who helps you with your homework

6.

Mr. Brown asked 30 students their favourite after school activities. The table below shows the results.

After-school activity	Number of students
Reading books	8
Listening to music	3
Doing sports	5
Playing computer games	14

Which of the following is CORRECT according to the table above?

- A) Listening to music is very popular among students.
B) Fifteen students love doing sports.
C) Nearly half of the students like playing computer games.
D) All students enjoy reading books.

Answer the questions 7 – 8 according to the information below.

Brian's Sunday Routines

- attend swimming course 11.45 a.m.
- watch his favourite cartoon 2.10 p.m.
- play football 4.45 p.m.
- go to his uncle's house 6.00 p.m.
- have dinner 6.45 p.m.
- get back home 8.30 p.m.
- write his diary 9.45 p.m.
- go to bed 10.00 p.m.

7. According to the information above, Brian ----.

- A) has dinner alone at home B) watches TV in the morning
C) plays football before the swimming course D) goes to bed after he writes his diary

8. It is ten to five p.m. Which of the following is Brian according to the table above?

A)



B)



C)

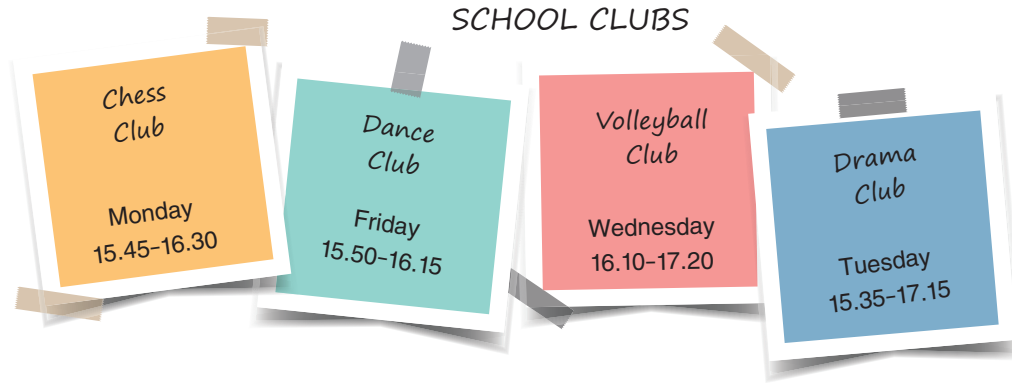


D)





9.



Which of the following is NOT correct according to the poster above?

- A) The chess club is at quarter past five p.m.
- B) The dance club starts at ten to four p.m.
- C) The volleyball club finishes at twenty past five p.m.
- D) The drama club starts at twenty five to four p.m.

10.



----?

I take care of my dog.



Which of the following completes the dialogue above?

- A) When do you feed your dog
- B) What is the name of your pet
- C) What do you do after school
- D) Where do you walk your dog



2. HAFTA



Kazanım:

Describing what people do regularly

Telling the time and dates

Adı ve Soyadı:

Sınıfı:

Doğru Sayısı:

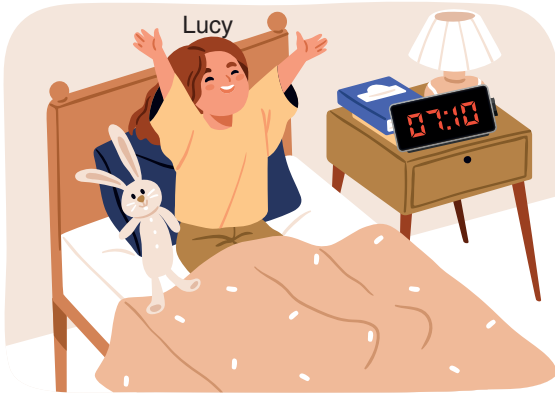
Yanlış Sayısı:

1. Jason buys a ticket for a comedy film. It starts at twenty to eight p.m.

Which of the following is the **CORRECT** ticket according to the information above?



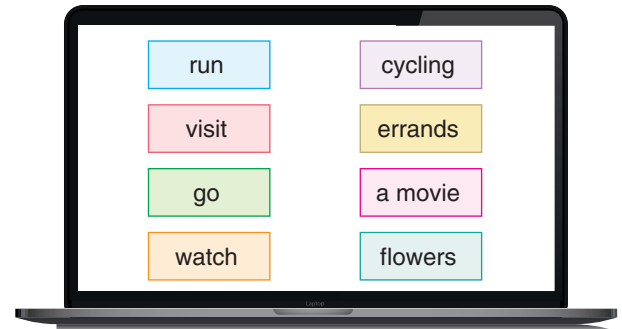
2.



According to the picture above, Lucy ----.

- A) goes to bed at seven
- B) wakes up at seven past ten
- C) gets up at ten past seven
- D) sleeps at ten to seven

3. Buse studies vocabulary on the Internet.



Which matching is **CORRECT** according to the information above?

- A) run errands
- B) go flowers
- C) visit a movie
- D) watch cycling



914969

ÖĞRENCİ NO

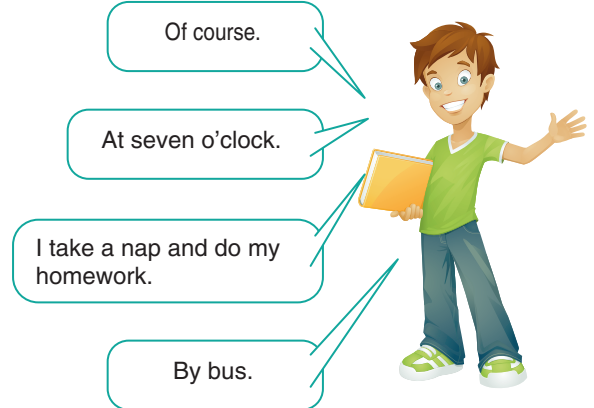
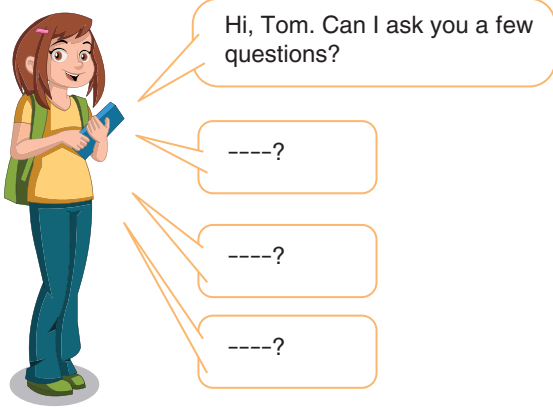
0	1	2	3	4	5	6	7	8	9
0	1	2	3	4	5	6	7	8	9
0	1	2	3	4	5	6	7	8	9
0	1	2	3	4	5	6	7	8	9
0	1	2	3	4	5	6	7	8	9
0	1	2	3	4	5	6	7	8	9
0	1	2	3	4	5	6	7	8	9
0	1	2	3	4	5	6	7	8	9
0	1	2	3	4	5	6	7	8	9
0	1	2	3	4	5	6	7	8	9

YANITLAR

1	A	B	C	D	11	A	B	C	D
2	A	B	C	D	12	A	B	C	D
3	A	B	C	D	13	A	B	C	D
4	A	B	C	D	14	A	B	C	D
5	A	B	C	D	15	A	B	C	D
6	A	B	C	D	16	A	B	C	D
7	A	B	C	D	17	A	B	C	D
8	A	B	C	D	18	A	B	C	D
9	A	B	C	D	19	A	B	C	D
10	A	B	C	D	20	A	B	C	D



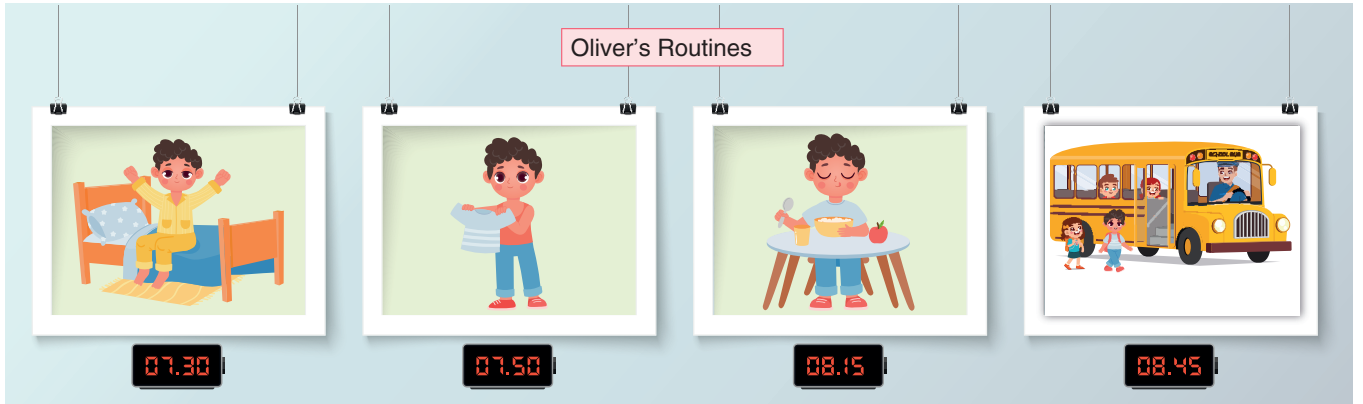
4.



Which question does NOT complete the dialogue above?

- A) What do you do after school
B) How do you go to school
C) What time do you get up
D) Where do you meet your friends

5.



Which of the following is NOT correct according to Oliver's routines above?

- A) Oliver gets dressed at ten to eight.
B) Oliver gets up at half past seven.
C) Oliver has breakfast at a quarter past eight.
D) Oliver walks to school at quarter to eight.

Answer the questions 6 - 7 according to the text below.

Mr. Smart is a doctor. He leaves home at half past seven every morning. He drives to work. He works from nine to four p.m. He spends time with his friends after work. He does sports at the gym at quarter to six p.m. He gets back home at ten to eight p.m. After dinner he watches his favourite TV programme at five past nine p.m. He goes to bed at half past ten.

6. Which of the following is NOT in the text above?

A)



B)



C)



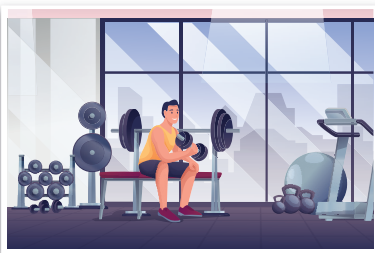
D)



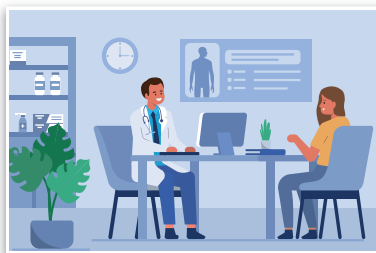
7. It is half past four p.m.

Which of the following is Mr. Smart according to the text above?

A)



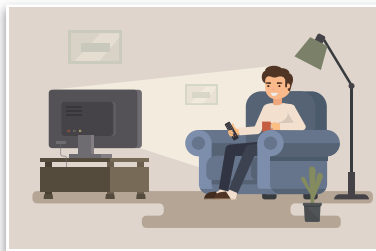
B)



C)



D)





8. The teacher asks her students their favourite activities.



Which of the following is **CORRECT** according to the information above?

- A) Leo isn't interested in music.
- B) Bill dislikes reading books.
- C) Cathy loves doing sports.
- D) Sue doesn't use the Internet.

Answer the questions 9 – 10 according to the text below.

I'm Selim. I am a student at a secondary school in Ankara. I get up early on weekdays because my first class starts at twenty past eight. I take the school bus at ten to eight after I have breakfast. I have lunch break at half past twelve. My school finishes at quarter to three p.m. I get back home at ten past three p.m. I have a snack and take a nap. I watch my favourite cartoon at twenty to five p.m. My mom comes home at half past five. I help her in the kitchen for dinner and I run errands. We have dinner at quarter to seven p.m. I do my homework and read a book. I go to bed at ten p.m.

9. According to the text above, Selin goes to school after ----.

- A) she takes a nap
- B) she has breakfast
- C) she watches a cartoon
- D) she runs errands

10. Which question **CANNOT** we answer according to the text above?

- A) How many lessons does Selin have a day?
- B) What time does the school finish?
- C) How does Selin go to school?
- D) What does Selin do before going to bed?



3. HAFTA



Kazanım:

Describing what people do regularly

Telling the time and dates



914970

ÖĞRENCİ NO

0	0	0	0	0	0
1	1	1	1	1	1
2	2	2	2	2	2
3	3	3	3	3	3
4	4	4	4	4	4
5	5	5	5	5	5
6	6	6	6	6	6
7	7	7	7	7	7
8	8	8	8	8	8
9	9	9	9	9	9

YANITLAR

1	A	B	C	D
2	A	B	C	D
3	A	B	C	D
4	A	B	C	D
5	A	B	C	D
6	A	B	C	D
7	A	B	C	D
8	A	B	C	D
9	A	B	C	D
10	A	B	C	D
11	A	B	C	D
12	A	B	C	D
13	A	B	C	D
14	A	B	C	D
15	A	B	C	D
16	A	B	C	D
17	A	B	C	D
18	A	B	C	D
19	A	B	C	D
20	A	B	C	D

Adı ve Soyadı:

Sınıfı:

Doğru Sayısı:

Yanlış Sayısı:

1.

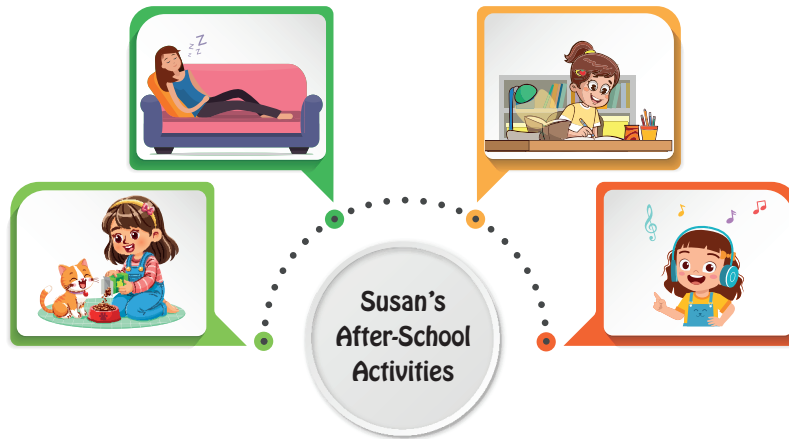


The dance club starts at ---- on ----.

Which of the following does NOT complete the sentence according to the poster above?

- A) ten past four / Friday
B) half past three / Monday
C) quarter to four / Wednesday
D) twenty to five / Tuesday

2.



According to the information above, Susan does NOT ---- after school.

- A) listen to music
B) look after the cat
C) run errands
D) take a nap



3.

Julia's Morning Routines

get up	- quarter past seven
have breakfast	- twenty to eight
brush her teeth	- five past eight
take the school bus	- twenty five to nine
lessons start	- ten to nine

According to the information above, which of the matchings is NOT correct?

A) 08.35

B) 08.30

C) 07.15

D) 07.40

4.

I attend chess course ---- twelve o'clock ---- Saturday.

Which of the following completes the sentences above?

- A) at / in B) in / at
C) in / on D) at / on

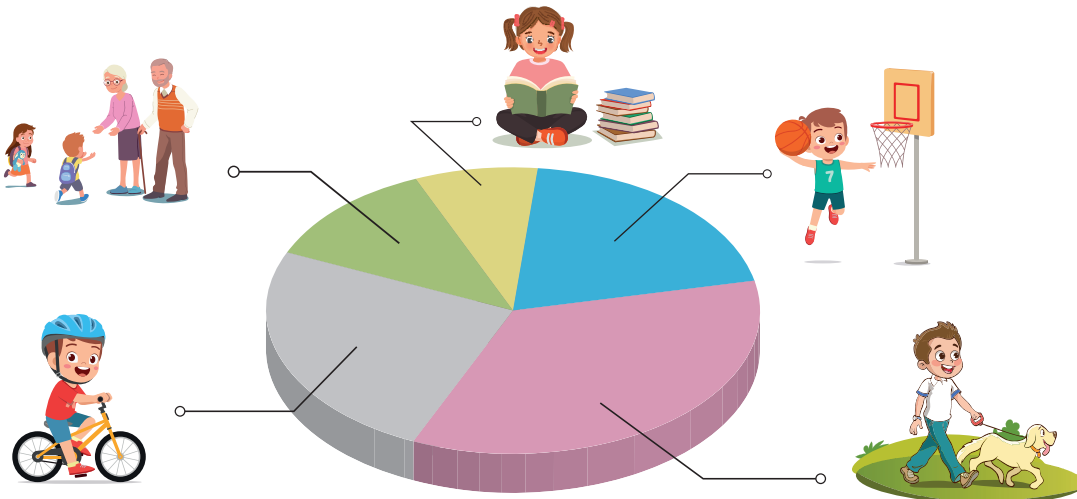
5. Liz does a questionnaire. The table below shows her answers.

Questions	Answers
----?	At the school canteen.
----?	Watching movies.
----?	At half past twelve.

Which of the following is NOT in the questionnaire above?

- A) Who cooks dinner at your home
B) Where do you have lunch
C) What time do your lessons finish
D) What is your favourite activity

6. 100 students answer questions about their favourite after school activities. The graph below shows the results.



Which of the following is **CORRECT** according to the graph above?

- A) All students love reading books.
- B) Half of the students like visiting relatives.
- C) Taking care of the pet is very popular among students.
- D) Playing basketball is the favourite activity of all students.

7.

Emma has dinner at quarter to seven. She reads a book and goes online. She listens to music and searches on social media. She brushes her teeth and goes to bed at half past nine.

Which of the following is the **BEST** title for the paragraph above?

- A) Emma's Morning Routines
- B) Emma's Evening Routines
- C) Emma's Favourite Music
- D) Emma's Relatives and Friends

8.

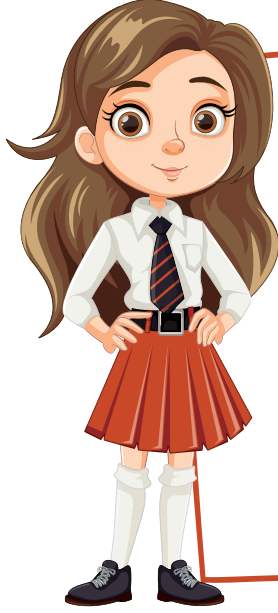
- I. She walks to school after breakfast.
- II. She takes a nap when she gets back home.
- III. Her lessons finish at quarter to three p.m.
- IV. Linda gets up early.

Which of the following is the **CORRECT** order of the statements above?

- A) IV - III - II - I
- B) I - IV - II - III
- C) I - III - II - IV
- D) IV - I - III - II

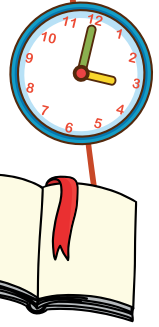


Answer the questions 9 – 10 according to the information below.



Aslı's Routines

06.30	get up	18.15	have dinner
06.55	have breakfast	18.40	help mom in the kitchen
07.45	go to school by bus	19.30	feed the cat
08.20	lessons start	19.45	go online
12.35	lunch break	20.15	read a book
14.50	lessons finish	21.30	go to bed
15.15	attend chess club		
16.30	return home		
16.50	watch favourite cartoon		
17.10	do homework		



9. Which of the following is NOT in Aslı's routines above?

- A) ten to two B) ten to three C) half past nine D) five to seven

10. Which of the following is NOT correct according to the information above?

- A) Aslı's lessons start at twenty past eight.
B) Aslı helps her mother after dinner.
C) Aslı goes to school on foot.
D) Aslı plays chess before she comes back home.



4. HAFTA



Kazanım:

Accepting and refusing

Describing what people do regularly

Expressing likes and dislikes



914971

ÖĞRENCİ NO

0	0	0	0	0	0
1	1	1	1	1	1
2	2	2	2	2	2
3	3	3	3	3	3
4	4	4	4	4	4
5	5	5	5	5	5
6	6	6	6	6	6
7	7	7	7	7	7
8	8	8	8	8	8
9	9	9	9	9	9

YANITLAR

1	A	B	C	D	11	A	B	C	D
2	A	B	C	D	12	A	B	C	D
3	A	B	C	D	13	A	B	C	D
4	A	B	C	D	14	A	B	C	D
5	A	B	C	D	15	A	B	C	D
6	A	B	C	D	16	A	B	C	D
7	A	B	C	D	17	A	B	C	D
8	A	B	C	D	18	A	B	C	D
9	A	B	C	D	19	A	B	C	D
10	A	B	C	D	20	A	B	C	D

Adı ve Soyadı:

Sınıfı:

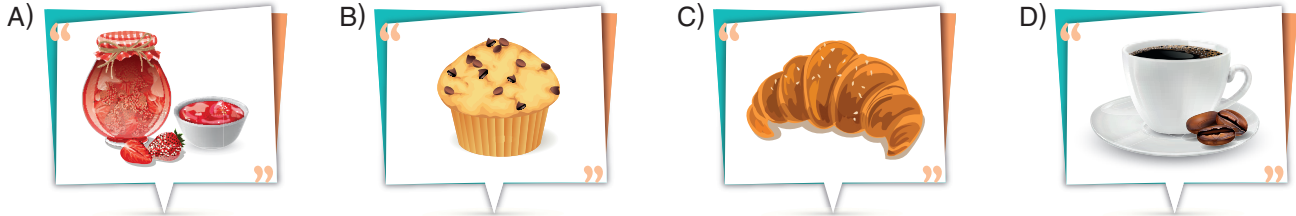
Doğru Sayısı:

Yanlış Sayısı:

1.



Which of the following is NOT at French breakfast according to the list above?



2.



-----?

An omelette, tomatoes and orange juice.



Which of the following completes the dialogue above?

A) Would you like some cheese

B) Do you like bagel at breakfast

C) What time do you have breakfast

D) What do you have for breakfast



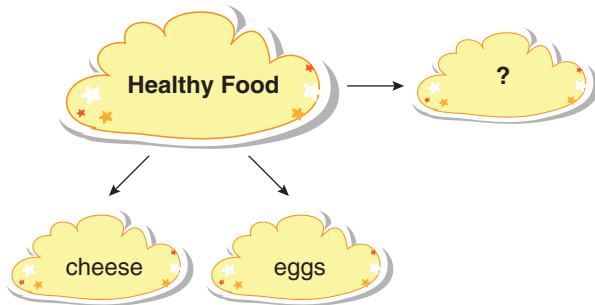
3. The table below shows the food preferences of Janet and her friends.

	Food	Drinks
Janet		
Mike		
Max		
Elif		

According to the table above, which of the following is NOT correct?

- A) Janet likes omelette. B) Mike has healthy food.
C) Max drinks milk. D) Elif loves bagel and tea.

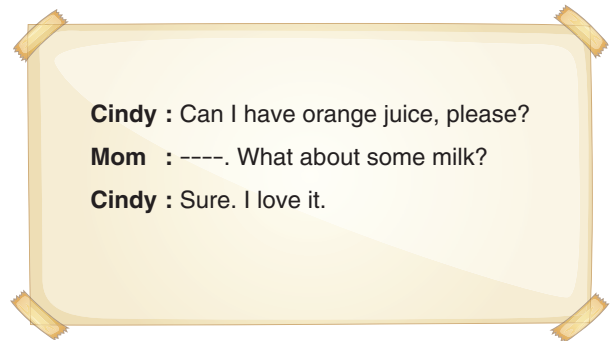
4.



Which of the following is suitable to the list above?

- A) sausages B) chips
C) olives D) muffin

5.



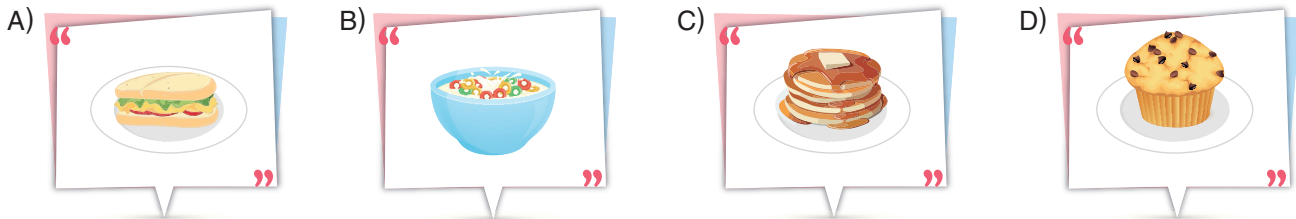
Which of the following completes the dialogue above?

- A) Yes, please B) Yummy
C) It's my favourite D) Sorry, its all gone

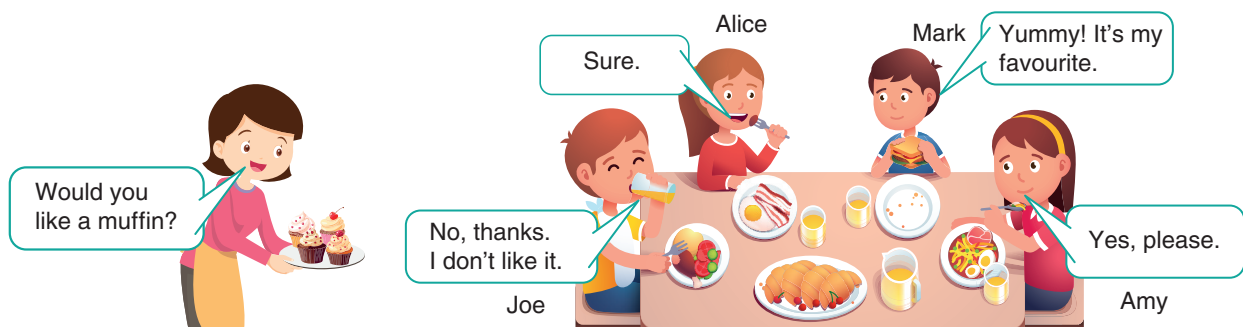
6.

Pam: Would you like a muffin?
Sam: No, thanks.
Pam: What about a cheese sandwich?
Sam: No, thanks.
Pam: Do you want cereal with milk?
Sam: Oh, no. I don't like it. Can I have a pancake with honey?
Pam: Sure. Enjoy it.
Sam: Thank you.

According to the dialogue above, which of the following does Sam want to have?



7.



According to the speech bubble above, who does NOT want to have a muffin?

- A) Joe B) Mark C) Amy D) Alice